

# STRAWBERRY ICE CREAM

## SAVES THE PLANET - WORKSHEET

### 1. Multiple choice – circle the correct answer.

**Who did the Chapman family ask about their new bin system**

- a. Grandparents
- b. Neighbours
- c. Searched on the computer
- d. The postman

**What did the Chapman family do to reduce their waste?**

- a. Took items to the op shop
- b. Gave away toys to neighbours and friends
- c. Took hazardous items to the nearest drop off point
- d. Fixed broken items
- e. Booked a bulk verge collection
- f. All of the above

**What did the Chapman family do to avoid food packaging?**

- a. Used produce bags
- b. Bought less items
- c. Stopped eating
- d. Recycled their ice-cream container

**For what occasion was the Chapman family hosting a party?**

- a. Birthday
- b. Anniversary
- c. Baby Shower
- d. Housewarming

### 2. True or false – circle the correct answer.

The Chapman family had a dog. True/False

The Chapman family produced a lot of rubbish at the party. True/False

Zoe and Jayden made paper decorations from a roll of old wallpaper for the party. True/False

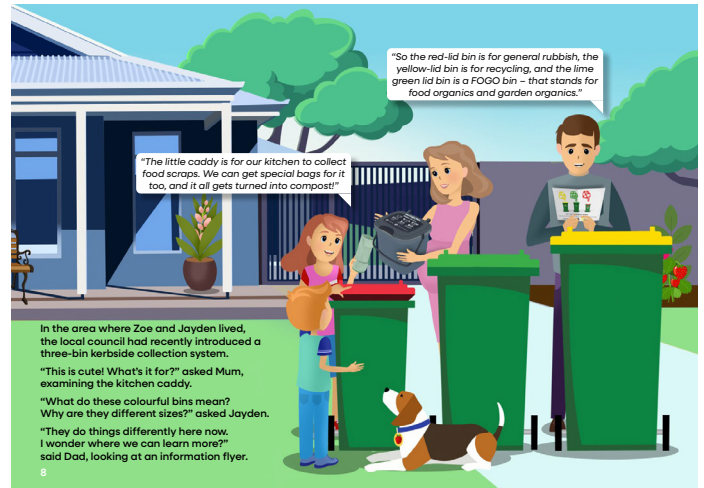
After sorting their waste, the Chapman family were still not able to close their bin lids. True/False

### 3. Number the following images in the correct order.

Number \_\_\_\_



Number \_\_\_\_



Number \_\_\_\_



Number \_\_\_\_



### 4. In your own words describe what happened in the story.

---



---



---



---



---

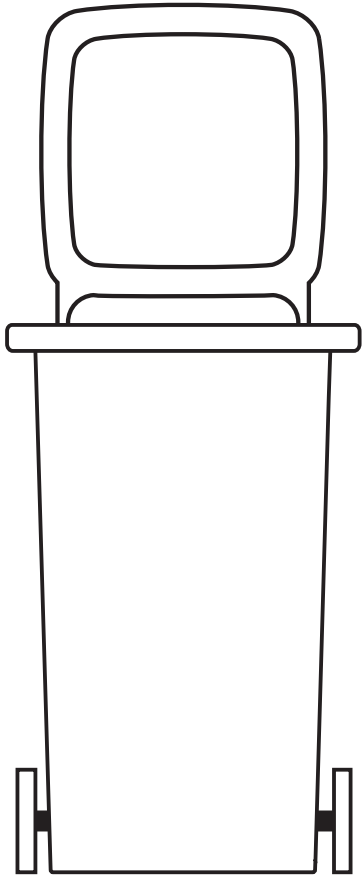


---

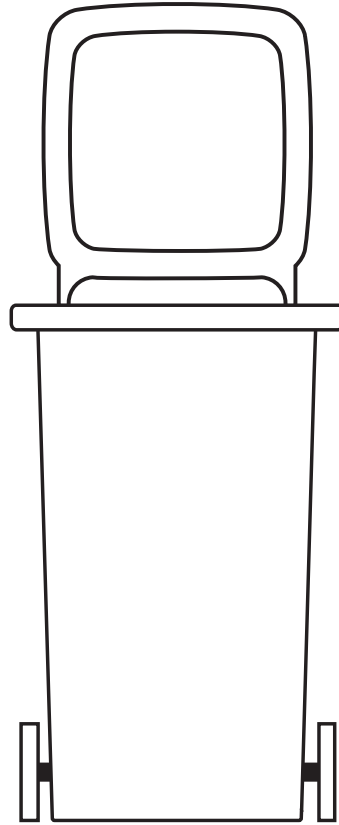
## 5. Complete the two tasks below:

- Colour each bin lid in the correct colour (yellow, lime green or red)
- Inside each bin, write four items that belong in it.

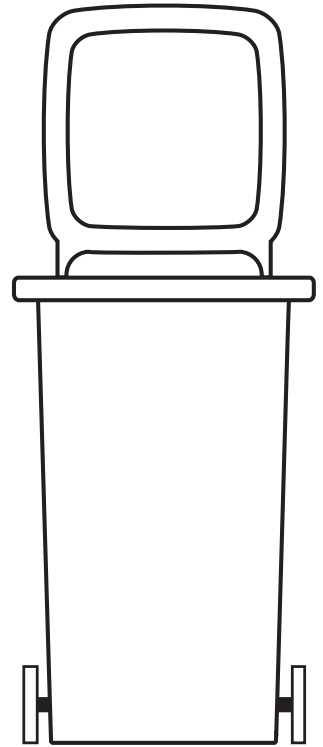
(HINT: Ask to see page 17 of the book)



**Recycling**



**FOGO**



**General  
waste**